

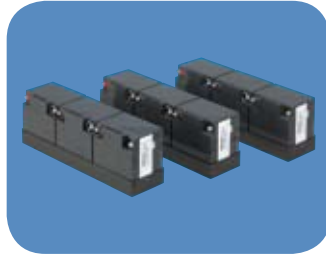
GE AMX 4 Portable Remanufactured

Huestis Medical remanufactures all GE AMX portables under a thorough electronic, mechanical and cosmetic program. Numerous upgrades include a new maintenance-free battery pack, critical structural reinforcements and replacement of major cabling and control components.

Huestis Medical then calibrates and tests each system to exacting standards backed by a 12-month warranty on workmanship and parts. Ask about our extensive inventory of new replacement battery systems and new, used and refurbished AMX parts.

ISO9001
REGISTERED

GE AMX 4 Portable



Replacement Battery Upgrades

Our sealed, Lead-Calcium battery packs offer maintenance-free service without modification. Ask about our retro-fit kits.

AMX-4 UPGRADES

- Reinforced base
- New style spring-loaded casters
- New style cassette draw
- Pad added to the bottom of the cassette drawer
- Hall effects tube latch assembly
- New style relay assembly for tube latch
- Upgraded drive wheels
- Upgraded drive motors
- New style micro-switches in the drive handle
- New style micro-switches in the collimator handles
- New style knobs and pointers on collimator
- Proprietary upgrade to rotor board
- Proprietary upgrade to the CPU
- ESD (Electro Static Discharge) cable added to the base unit
- ESD wire added to the top shroud
- ESD added to the drive handle
- New style PCB interconnect cables with choke installed
- Protective wrap added to the top shroud
- AMX-4+ style vertical column positioning of X-ray tube through 270-degree column rotation
- Proprietary battery charge labeling
- Green charge indicator light added
- Remote battery charge voltage test terminal block added
- A copy of the calibration data (battery back-up RAM chips) is archived for a period of two years



CPI High Frequency Generator

CPI incorporates time-tested technology with innovative user interfaces to meet the most demanding imaging needs.

Features:

- New 28 Amp/Hour Lead Calcium Batteries
- New control panel decals
- New H.S. cord and housing
- New small diameter HV cables
- New L.V. cables
- New counterweight cables
- New wrap-around bumpers
- Upgraded front casters (if needed)
- New drive belts
- New hospital grade cord cap
- New collimator dials
- Mechanical assemblies inspected and rebuilt as necessary
- New bearings where needed
- Complete calibration to meet or exceed OEM specifications

Technical Specifications

- 100 mA constant
- kVp 50 – 125
- mAs 0.4 – 320
- 24 kVp stations
- 30 mAs stations
- X-Ray tube MX-75 275k HU
- Focal spot .75 mm
- Dual motor drive (forward & reverse)
- Variable speed drive
- High frequency generator
- LED display
- Electric solenoid locks

